




gardeners

growing school gardens



2022 ANNUAL REPORT

GARDENEERS CULTIVATES  
CUSTOMIZED SCHOOL GARDEN  
PROGRAMS TO ENSURE EACH  
SPACE, AND THE STUDENTS AND  
COMMUNITIES WHO CARE FOR IT,  
CONNECT WITH HEALTHY FOOD  
AND GROW TO THEIR FULL  
POTENTIAL.



Mission.....	03
Letter from the Board.....	05
2022 Highlights.....	06
Our Impact.....	09
Logic Model .....	12
DEI.....	15
Financials .....	16
Our Team .....	19







“  
*This program is very  
valuable to my students.  
They love it and I do, too.*

”  
— Ms. Y,  
5th grade teacher

## LETTER FROM THE BOARD

We are so proud of our accomplishments this year. In 2022, we expanded significantly. We expanded the number of students we serve from 969 students last fall to 1,066 students this spring, and then to 1,332 students this fall. We also grew 3,574 pounds of food which we distributed to families through our free after-school farm stands and through partnerships with other local organizations.

But these numbers are just the start of the story. At schools across the south and west sides of Chicago, students in our school gardens are connecting with healthy food and building healthy habits they will take with them throughout their lives. Our partnerships are helping school communities grow healthier, happier, and more vibrant.

To everyone who has supported Gardeneers, you have our most sincere and heartfelt gratitude. Thank you for making this valuable work possible, and we look forward to working with you on building a more healthy and sustainable future.

In Community,

## THE GARDENEERS BOARD OF DIRECTORS



**NATASHEE SCOTT**  
President  
of the Board  
General  
Counsel and  
Deputy Chief-  
of-Staff, Office  
of Illinois Lt.  
Governor



**ANDREW CALCUTT**  
President and  
Co-Founder,  
Sleeping Bear  
Capital



**JESS ZANDER**  
Founder/CEO,  
Propelling Good



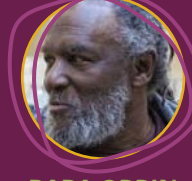
**WAYNE WILLIAMS**  
Former  
Principal,  
Chicago Public  
Schools  
and District 65



**MAY TSUPROS**  
Founding  
Collaborator,  
SunTree  
Collaboration,  
Co-Founder,  
Gardeneers



**PASTOR  
RESHORNA  
FITZPATRICK**  
Pastor, Stone  
Temple Baptist  
Church



**BABA ORRIN  
WILLIAMS**  
UIC, Food Systems  
Coordinator,  
Chicago  
Partnership  
for Health  
Promotion, Office  
of Community  
Engagement and  
Neighborhood  
Health  
Partnerships



**ADAM ZMICK**  
Co-Founder,  
Gardeneers





**NORTH**  
**ELIZA CHAPPELL ELEMENTARY SCHOOL**

**WEST**  
**DRW COLLEGE PREP**  
At Homan Rails Farm, students are smiling as they learn about **food preservation techniques**.

**PICCOLO SCHOOL OF EXCELLENCE**  
Our gardens make more than just food. In these pictures, students at Piccolo School of Excellence are **learning about natural dyes and paper-making**.

**MARINE LEADERSHIP ACADEMY**  
**SMYTH IB WORLD SCHOOL**  
**HOLY FAMILY MINISTRY SCHOOL**  
**DVORAK SCHOOL OF EXCELLENCE**  
**MASON ELEMENTARY SCHOOL**  
**NORTH LAWNSDALE COLLEGE PREP**



**SOUTH**  
**EARHART ELEMENTARY SCHOOL**  
These students at Earhart Elementary are giving us the thumbs-up. Their school garden is a great place to learn.

**KERSHAW ELEMENTARY SCHOOL**  
Fresh, local vegetables aren't the only health benefit coming from this school garden. At Kershaw Elementary, we did a lesson **teaching meditation** as a skill that can be used to improve mental health.

**URBAN PREP ACADEMY - ENGLEWOOD**  
**VANDERPOEL ELEMENTARY SCHOOL**  
**ALDRIDGE ELEMENTARY SCHOOL**  
**GEORGE WASHINGTON CARVER ELEMENTARY SCHOOL**

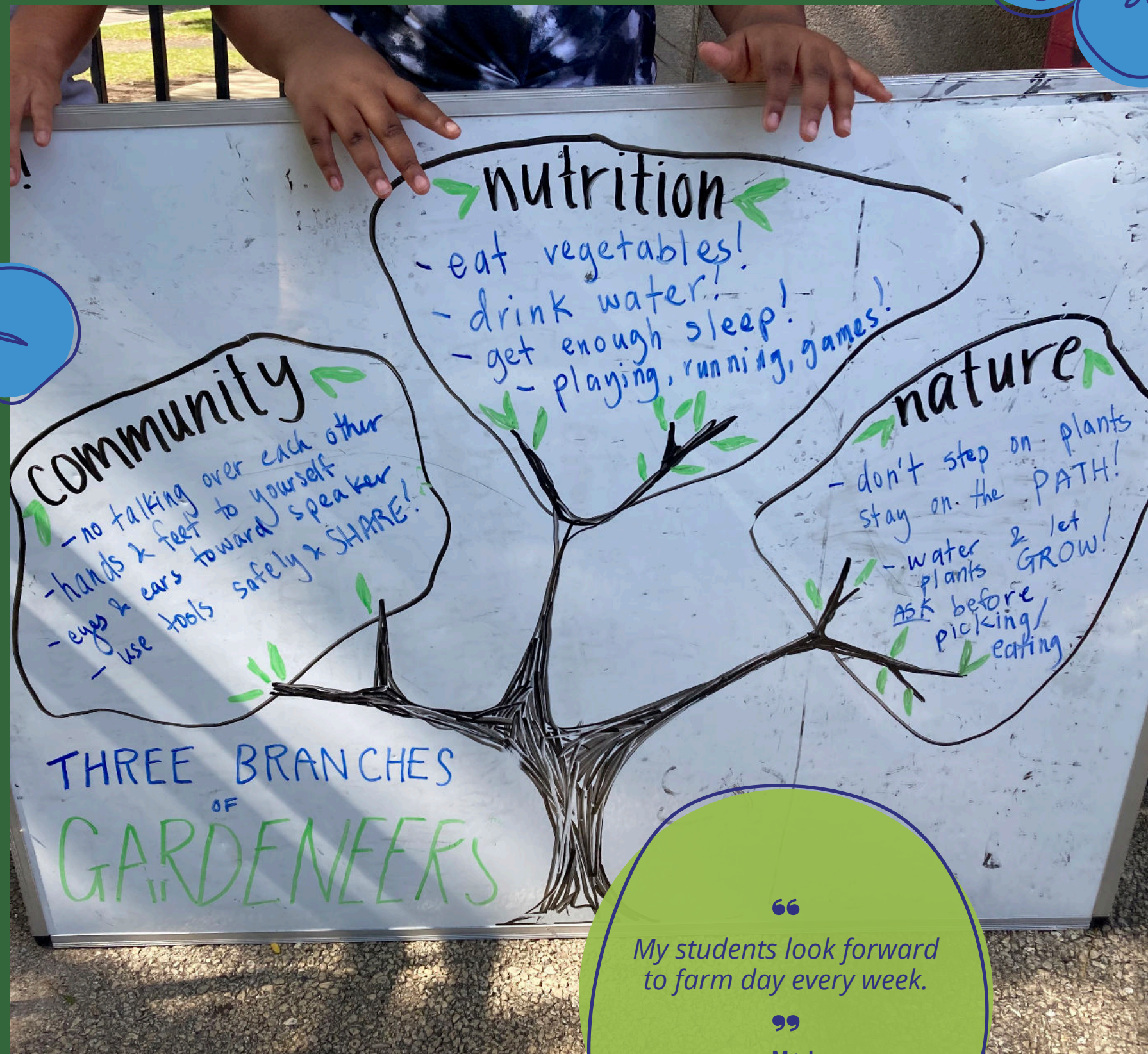


**SOUTHWEST**  
**SARAH E GOODE STEM ACADEMY**  
At *Sarah E Goode STEM Academy*, the school garden has been producing **40-70 pounds of fresh fruits and veggies**. Teens in this After School Matters program give it away free to community members at their weekly farm stand.

**LEE ELEMENTARY SCHOOL**  
Community is one of our three pillars, and we teach lessons specifically about cooperation and teamwork. These students are Lee Elementary are doing our "gutterball" activity, and **learning the importance of communication** and







**74.3%** of students say they **like vegetables more** after our program

OUR IMPACT 



**76.9%** of students said our program **helped** them **change their behavior** or made them want to change their behavior **to improve their health**

**80.3%** of our students say they **gained knowledge** about how **to improve their health** as a result of this program



**82.8%** of students **tried a new fruit or vegetable** for the first time during our program





## SOCIAL-EMOTIONAL LEARNING (SEL)

SEL metrics - we use a 3rd party technology assessment tool to measure the social-emotional growth of teens in our five After School Matters programs, which uses the following metrics:

### Core SEL

An encapsulation of several SEL capacities which are all interdependent and positively affect the development of emotional, cognitive, and behavioral factors in young people's lives.



#### Academic Self-Efficacy

A young person's motivation and perceived mastery over their own learning, school, performance, and potential to attain academic success



#### Contribution

A young person's desire to engage with and contribute to family, community, and society



#### Positive Identity

A young person's internal sense of who they are and confidence to explore the multiple facets of their identities



#### Self-Management

The ability of a young person to regulate their emotions and behavior, take positive risks, and persist through life's changes



#### Social Skills

The ability of a young person to take others' perspectives into account and to develop a sense of caring and empathy

969

Students at  
9 schools  
in Fall 2021

1066

Students at  
17 schools  
in Spring 2022

1332

Students at  
16 schools  
in Fall 2022



**72%** of our students **demonstrated growth** on the 3 or more of the 5 SEL metrics



**91%** of our students say **our staff frequently reminded them that we believe in them and their ability to succeed**

**97%** of teens **demonstrate growth in social-emotional capacities** after participating in a Gardeneers program



**100%** of school leaders said that the **Gardeneers** program has **had a positive overall impact** on their school



**89%** of our students said **our staff made them feel safe and supported** by consistently and purposefully applying their recommendations





## INPUTS

SCHOOLS

YOUTH

FAMILIES

GARDEN & FARM SPACES

STAFF

VOLUNTEERS

COMMUNITY MEMBERS

TOOLS AND EQUIPMENT

GOVERNMENT FUNDING

PHILANTHROPIC  
FUNDING

## ACTIVITIES

School partnership agreements

Staff recruiting, training, development, and support

Volunteers, staff, and students care for and maintain gardens

Staff and students engage in weekly lessons centered on nutrition, community, and nature

Staff-led and student-supported free farm stands at schools

Fundraising through charitable donations, grant-making, sponsorship, and events

## OUTCOMES

Youth improve in their understanding of basic nutrition - **80.3%** of our students say they **gained knowledge** about how to **improve their health** as a result of this program

Youth learn how to grow food and how to incorporate garden produce into recipes - **82.8%** of students **tried a new fruit or vegetable for the first time** during our program

**76.9%** of students said **our program helped them change their behavior** or made them want to change their behavior **to improve their health**

**97%** of teens in demonstrate **growth** in social-emotional capacities **after participating** in a Gardeners program

**100%** of school leaders agree that **Gardeneers** has had a **positive overall impact** on their school

## IMPACT

Gardeneers graduates lead healthy, abundant lives throughout which they prioritize caring for the Earth and its inhabitants

## OUTPUTS

Gardeneers partnered with **16 schools** in 2022, engaging **1,066 students** this spring, and **1,332 students** this fall

Students participated in more than **23,000 hours** learning in **school garden** programs in 2021

Gardeneers grew and distributed **3,290 pounds** of locally grown fruits and vegetables, and distributed them to our school communities at **109 access points**



“

Our class always enjoys Gardeneers. They are learning not only about food, but also food supply chains, the economy of food, and the social-emotional effects of healthy choices.

”

- Ms. S,  
3rd grade teacher



A **school garden** is a living laboratory where students are active participants in their learning. Gardeneers empowers students to connect with healthy food through experiential, garden-based learning.

Our **programming** is offered March through November, and includes opportunities for students (grades K-12) to engage with gardens during the school year and throughout the summer.





## DIVERSITY, EQUITY & INCLUSION

In past annual reports, we've talked about the importance of outwardly naming systemic racism as the true cause of food inequity. Our work has always used the act of growing food to positively impact our communities in a multitude of ways, with a particular focus on food justice. Over the past two years, however, we have taken additional steps to ensure that every component of our organization contributes towards combating systemic racism. To that end, we are now tracking - and publicly sharing our progress on - statistics related to diversity, equity, and inclusion.

### DIVERSITY ON OUR BOARD OF DIRECTORS

In 2019, 20% of our Board members were people of color, and 30% were women.

Now, 50% of our Board members are people of color, and 50% are women. The President of our Board of Directors is a black woman.

### DIVERSITY ON OUR TEAM

In 2019, 44% of our team were people of color and 67% were women.

Now, 80% of our team are people of color and 60% are women. Our CEO is a black woman.

### DIVERSITY AMONG OUR CONTRACTORS

In 2019, 30% of our contractors were people of color, comprising less than 10% of total contractor dollars spent. 70% of our contractors were women, comprising 83% of total contractor dollars spent.

In 2022, 66% of our contractors were people of color, comprising 62.9% of total contractor dollars spent. 66% of contractors were women, comprising 78.9% of total contractor dollars spent.







# GARDENEERS PROFIT & LOSS

## JANUARY - DECEMBER 2022

REVENUE	
Foundations & grants	\$462,947
Government	\$235,795
Earned Revenue	\$225,393
Individual Donations	\$117,712
Corporate	\$66,357
Events & Etsy	\$14,735
Reward Points Redemption	\$4,012
PPP Loan Forgiveness	\$135,104
<b>TOTAL REVENUE</b>	<b>\$1,262,057</b>

**NET INCOME** **\$379,606**

PROGRAM  
**72.9%**

ADMIN  
**19.3%**

FUNDRAISING  
**7.7%**



EXPENSES	
<b>TOTAL PERSONNEL</b>	<b>\$631,028</b>
Salaries, Wages, & Americorps Stipends plus Payroll Taxes	\$584,831
Health & Other Benefits	\$39,982
Workers Comp & Payroll Processing	\$6,213
<b>TOTAL PROFESSIONAL FEES</b>	<b>\$122,435</b>
Fundraising & Grant Writing	\$51,047
Administrative Assistance	\$38,610
Accounting & Audit Fees	\$19,500
Photography & Design	\$9,268
PR & Strategy	\$4,010
<b>TOTAL OCCUPANCY &amp; OPERATIONS</b>	<b>\$66,524</b>
Rent, Utilities	\$17,612
Office Supplies & Technology	\$15,795
Advertising & Marketing	\$8,094
Vehicle Expenses	\$6,318
Event Expenses	\$5,940
Travel	\$4,959
Insurance	\$3,997
Staff Development & Culture	\$3,804
<b>TOTAL DIRECT EXPENSES</b>	<b>\$62,463</b>
Materials	\$52,155
Training	\$10,307
<b>TOTAL EXPENSES</b>	<b>\$882,451</b>



“ Students love the experience and look forward to learning each year - just really enjoy the experience that kids get from hands-on learning. Students are open to new tastes. They also want to choose healthier foods. ”

— Ms. C, Teacher





“Love having you here.  
Love this program”  
— Mr. P, Principal

## OUR TEAM



### OUR TEAM

Selma **Sims**  
Adam **Zmick**  
Paris **Monaghan**  
Leah **Goldbloom**  
Rebecca **MacDonald**  
Sara **Desmond**  
Mikaila **Davis**  
Alexis **Burnley**  
Jelly **Sanchez**  
Marina **Garcia**



### AMERICORPS SERVICE MEMBERS

Amissa Page-Samuels  
Angie Quezada  
Carri Ponder  
Cassandra Rushing  
Cielo Munoz  
Emily Rubin  
Galena Fessler  
Jenn Eisner  
Jhaila Jiqole  
McWilliams-Jernigan

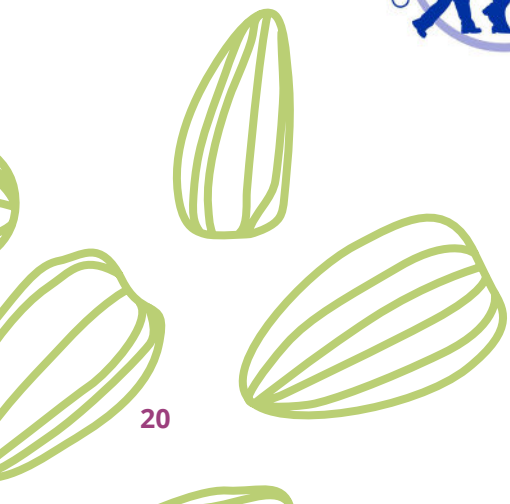
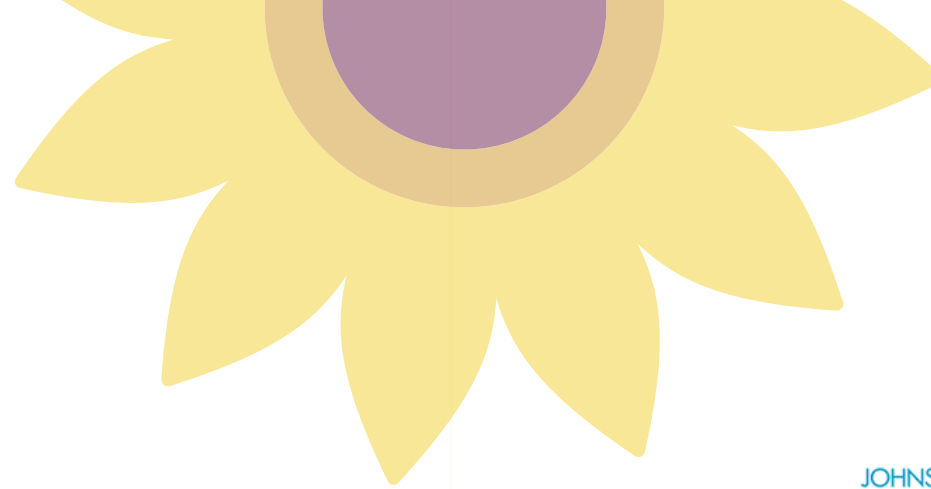
Kush Bulmer  
Leah Rogers  
Leann Ngo  
Massiah Hoard  
Mecca Latham  
Qwayed Ashan  
Rachel Muir  
Skye Radwan  
Tiffany Lewis-Collins

Tulio Hernandez  
Markita Barksdale  
Yvette McCaskill  
Ali Rose  
Nate Large  
Dawn Evans

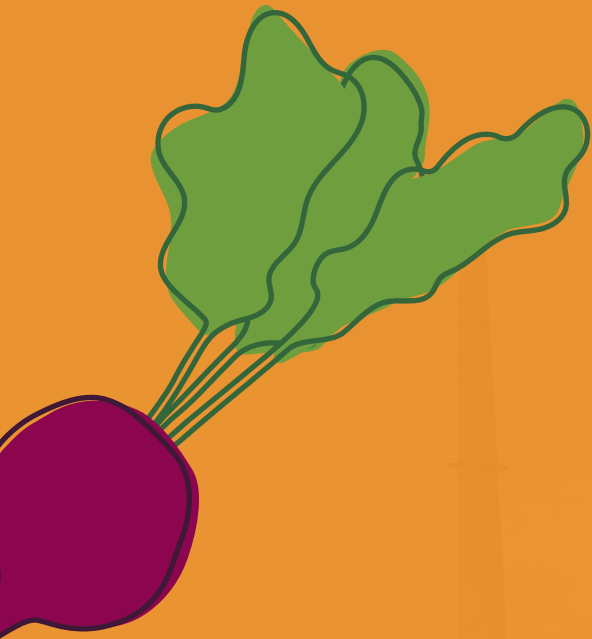




## THANK YOU TO OUR PARTNERS & SPONSORS







gardeneers  
growing school gardens



Supporting Student  
Nutrition



Experiencing  
Nature



Connecting with  
Communities

[gardeneers.org](https://gardeneers.org)

Copyright Gardeneers 2023© All rights reserved.